

# Den Con Electronics

*Presents*

## Data-TrackerCE 4.1

Data Tracker CE 4:22

DRILL PIPE Records:

ITEM		1-10
TAG CODE		11-20
SERIAL #		21-30
SIZE		31-40
GRADE		41-50
OAL		
SSL		
WT PER FOOT		
CONNECTIONS		
STRESS RELIEF	<input type="checkbox"/>	

Done Submit Clear All Scan Tag

File Options Admin Help

***New Data-TrackerCE Version 4.1 complete with integrated RFID "Scan Tag" programming!***  
***New Data-TrackerCE now has 50 user configurable fields!***  
***New Data-TrackerCE now has Auto Number Fields!***  
***New Data-TrackerCE incorporates Date/Time pop-up with custom Date/Time formatting!***

**Den Con Electronics**  
**A Division of Den Con Companies**  
**5354 S. I-35**  
**Oklahoma City, Oklahoma, 73129**  
**405-670-5942**

# Den Con Electronics

*Presents*

## Data-TrackerCE 4.1

Data Tracker CE 1:11  
HANDLING EQ Records: 0  
ITEM NUMBER 1  
TAG CODE:  
DECIPTION: ELEVATOR  
MFGR PART #: DP SLIPS  
SERIAL #: DRILL COLLAR SLIP  
CURRENT LOC: SAFETY CLAMP  
DATE IN SERV: ELEVATOR  
ORIG COST:  
SPARE PARTS: SELECT ITEM  
SIZE:  
Done Submit Clear All  
File Options Admin Help

***New Data-TrackerCE Version 4.1 complete with integrated RFID "Scan Tag" programming!***  
***New Data-TrackerCE now has 50 user configurable fields!***  
***New Data-TrackerCE now has Auto Number Fields!***  
***New Data-TrackerCE incorporates Date/Time pop-up with custom Date/Time formatting!***

**Den Con Electronics**  
**A Division of Den Con Companies**  
**5354 S. I-35**  
**Oklahoma City, Oklahoma, 73129**  
**405-670-5942**

# Den Con Electronics

*Presents*

## Data-TrackerCE 4.1

Data Tracker CE 4:22

Records: 0

Item Number: 1

Tag Code:

Serial Number:

Descr:

Location:

Scan Tag

Done Submit Clear All

File Options Admin Help

***New Data-TrackerCE Version 4.1 complete with integrated RFID "Scan Tag" programming!***  
***New Data-TrackerCE now has 50 user configurable fields!***  
***New Data-TrackerCE now has Auto Number Fields!***  
***New Data-TrackerCE incorporates Date/Time pop-up with custom Date/Time formatting!***

**Den Con Electronics**  
**A Division of Den Con Companies**  
**5354 S. I-35**  
**Oklahoma City, Oklahoma, 73129**  
**405-670-5942**

# Den Con Electronics

RFID Electronics for Harsh Environments

## Data-TrackerCE 4.1

The screenshot shows the 'Data Tracker CE' application window. The title bar includes the Windows logo, the text 'Data Tracker CE', and system icons for network, volume, and time (2:29). The main window title is 'SHIPPING' with 'Records: 2' on the right. The form contains the following fields: 'ITEM TAG CODE:' (with a range indicator '1-10'), 'MMO:', 'PRO NUMBER:' (with a range indicator '11-20'), 'SHIP TO:', 'ADDRESS:', 'CITY:', 'STATE:', 'ZIP:', 'SHIPPED VIA' (with a dropdown arrow and a range indicator '21-30'), and 'CUSTOMER PO:' (with a range indicator '31-40'). A vertical range indicator on the right side of the form shows '41-50'. At the bottom of the form are buttons for 'Done', 'Submit', 'Clear All', and 'Scan Tag'. The Windows taskbar at the bottom shows 'File Options Admin Help' and a keyboard icon.

User Programmable field designations

Field Lengths up to 60 Characters

Integrated "Scan Tag" Control

***Use up to 50 user programmable fields to:***

Track Material Transfers

Keep Electronic Records of Who Shipped What Where

Keep Records with Signatures to verify Shipping or Receiving

Know what Freight Carrier was used

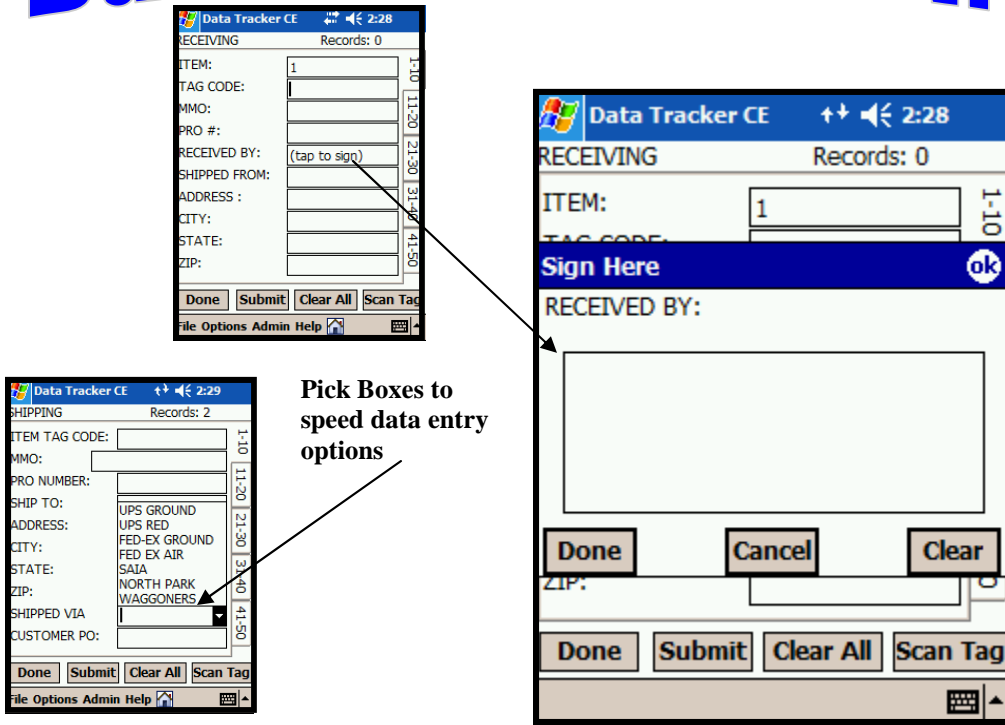
Use your own Company's format for items shipped

*Den Con Electronics  
A Division of Den Con Companies  
5354 S. I-35  
Oklahoma City, Oklahoma, 73129  
405-670-5942*

# Den Con Electronics

*RFID Electronics for Harsh Environments*

## Data-TrackerCE 4.1



*Use up to 50 user programmable fields to:*

Track Material Transfers

Keep Electronic Records of Who Shipped What Where

Keep Records with Signatures to verify Shipping or Receiving

Know what Freight Carrier was used

Use your Company's Terminology for items Shipped or Received

Den Con Electronics  
A Division of Den Con Companies  
P.O. Box 1711  
Rock Springs, Wyoming, 82902  
307-389-0123  
edp@onewest.net